



**What will be the  
relevance and  
benefit of a NSDI  
in 2027?**

# NSDI

What is an NSDI anyway?

“the technology, policies, standards, and human resources necessary to acquire, process, store, distribute, and improve utilization of geospatial data”

*Put simply, the goal is to:  
turn data into information,  
information into insight,  
insight into action,  
action into value!*

# Needs

What do citizens want?

The consumer wants the value.

***That's it.***

This is an exercise in market satisfaction, not supplier-orientated technological solution development

*Obfuscate the complexity*

*Engender confidence*

*Facilitate boundlessness*

*Deliver value*

*Anonymity is our success*



# Accessibility

Is this what we currently give them?

We have siloed ourselves Historically to solve the challenges of collecting and curating spatial data but now we find ourselves isolated from the mainstream

The solutions that we have developed are domain specific and while very good challenge the non-expert and obstruct the broader access and use of spatial data.

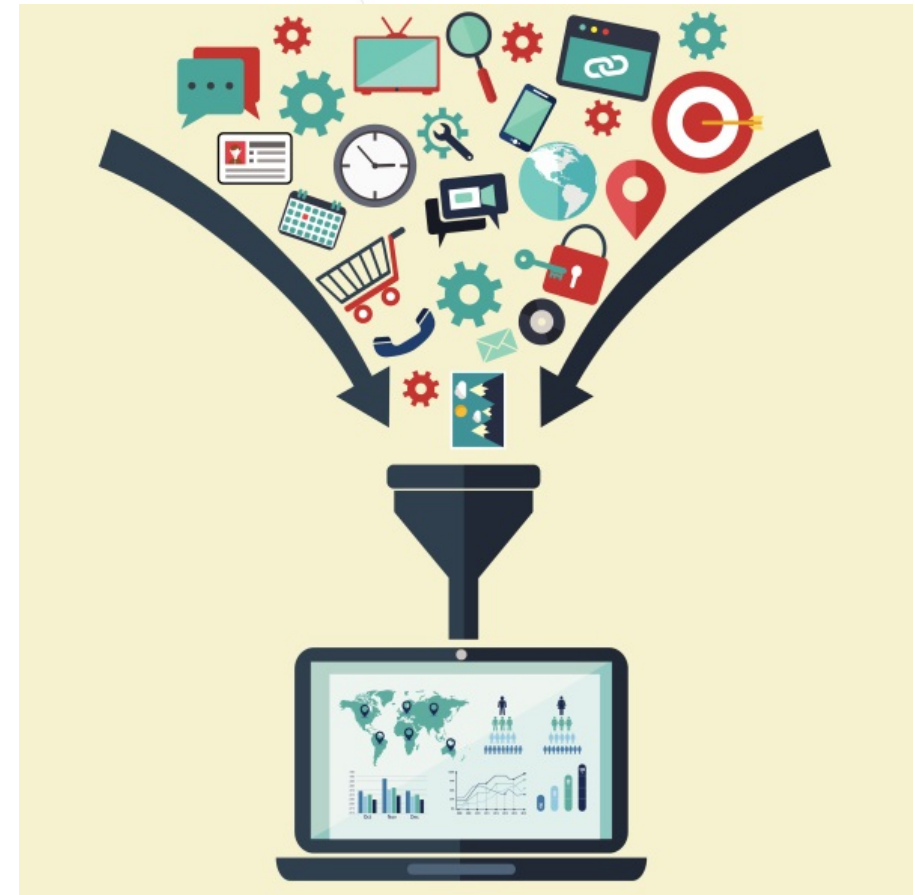
# Data

Is data capture or technology the problem?

Advances in data capture technologies means there is more data from more sources than ever before

We need to change the way we manage data

We need to change the way we manage spatial data.



# Integration

What needs to happen to deliver into the future?

Not just integration between spatial data themes but deep, seamless and real-time integration across domains allowing a coalescing of all data.

Collaborative ecosystem of platforms facilitating the value creation sought by consumers.



# POLICY

Is this our focus for the future?

Can we create the environment necessary to bring about the success that is described here.

Its success is dependant on facilitating seamless cross-disciplinary integration.

*A beautiful problem. One we should embrace as we can lead the way.*



The background is a dark blue map with various data overlays. A central circular area is highlighted with a white border. To the right, there is a circular inset showing a 3D view of a building with a height of 16.8M and a surface cover of trees. Text labels on the map include 'ADDRESS ID: GANSW717522589', 'EVE HEIGHT: 3.4M', 'ROOF CONSTRUCTION: MEDIUM COMPLEXITY', 'ROOF MATERIAL: TILE', 'BUILDING HEIGHT', '300M', and 'SURFACE COVER: TREE'.

*There is no latitude without longitude,*

*There should be no data without location.*

*By 2027 we should not be seeking to build a better  
NSDI.*

*But collaborating to deliver an ecosystem of  
interconnected cross-disciplinary data and services  
that underpins value creation.*