

OS OpenSpace

Getting started guide

v1.1



OS OpenSpace® 

Introduction

Welcome to the OS OpenSpace® getting started guide.

You will have been provided with your OS OpenSpace application programming interface (API) key and URL – <http://openspace.ordnancesurvey.co.uk> – and should be ready to start building and testing your application.

We have developed this getting started guide to provide you with instructions and supporting information on how to get the best out of OS OpenSpace .

In this document you will find simple code examples, common questions and answers, a number of user gallery submissions provided by our existing OS OpenSpace customers and where to find further help and support.



Case studies

Introduction

Case studies

Common questions

Code examples

Technical questions

Service levels

Datasets available

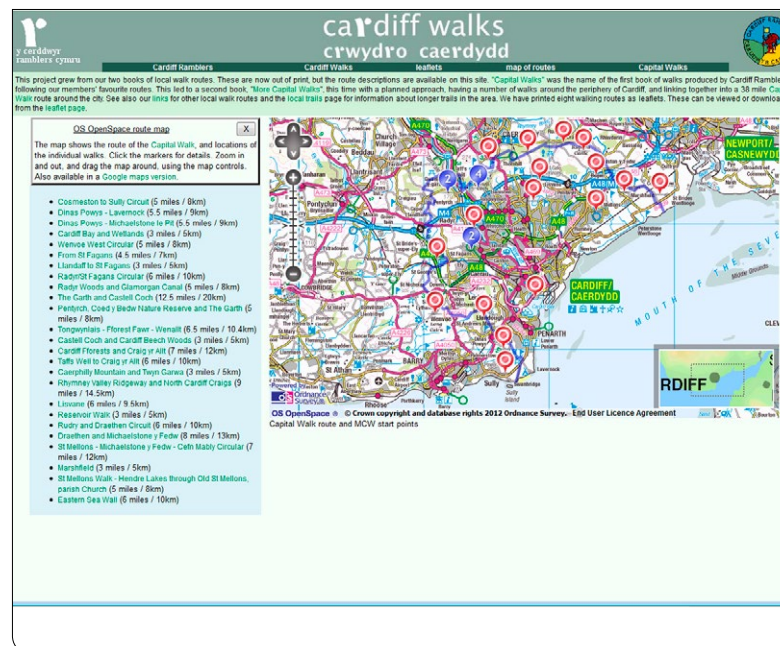
Moving from trial to a commercial licence

Finding help

cardiff walks
crwydro caerdydd

www.cardifframblers.org.uk/cardiffwalks/intro.php

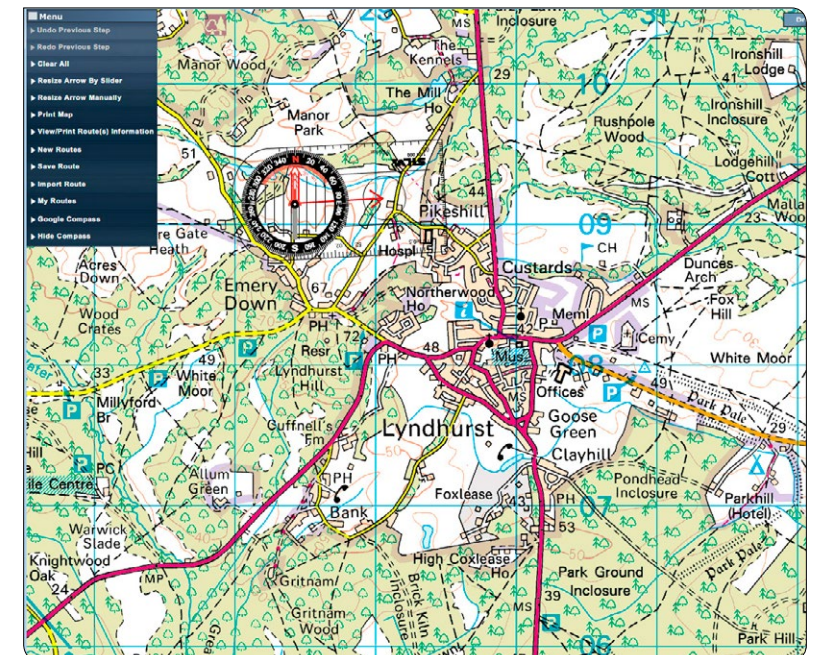
Route maps and descriptions for a selection of rambles in the Cardiff area. Previously available only using Google Maps™, but recently converted to use OS OpenSpace maps as well.



Ordnance Survey Compass

oscompass.com

This tool overlays a moveable compass on an Ordnance Survey map to plot and record map routes. It adjusts for magnetic variation and displays compass bearings, grid references coordinates and route distances.



Introduction

Case studies

Common questions

Code examples

Technical questions

Service levels

Datasets available

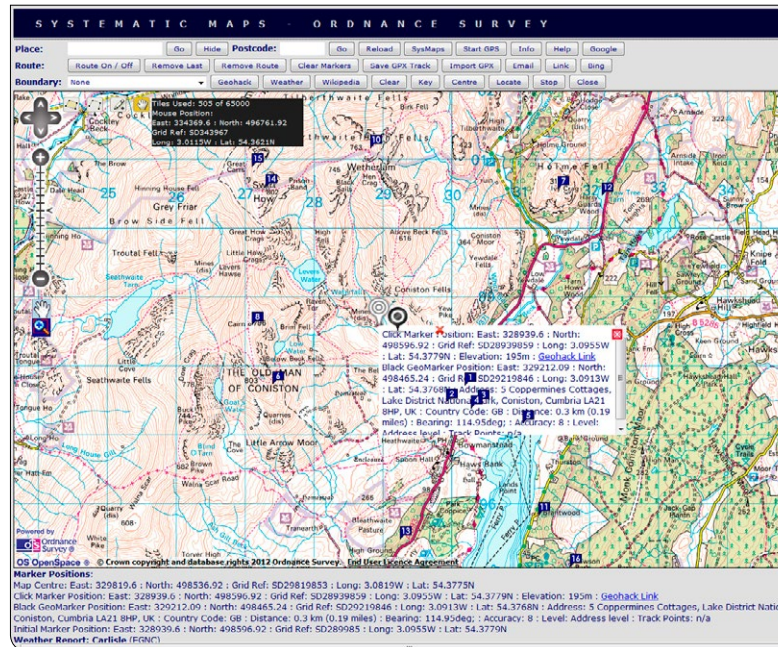
Moving from trial to a commercial licence

Finding help

SYSTEMATIC MAPS

www.sysmaps.co.uk/sysmaps_os.html

Ordnance Survey maps with search, address lookup, routes, import and export, Wikipedia®, live GPS and positioning, and other services as part of a suite of maps.



Assynt Angling Information

www.assyntanglinginfo.org.uk/mapstraction

Explore different fishing locations in Assynt, Scotland. Our maps provide details no other online mapping provider can for this remote area. Part of a Big Lottery Fund research project led by Substance.



Introduction

Case studies

Common questions

Code examples

Technical questions

Service levels

Datasets available

Moving from trial to a commercial licence

Finding help

Common questions

Q. What data is available through OS OpenSpace free?

A. The following mapping layers are available:

- Outline of Great Britain
- Overview of Great Britain
- MiniScale®
- 1:250 000 Scale Colour Raster
- 1:50 000 Scale Colour Raster
- OS VectorMap® District
- OS Street View®

OS OpenSpace lookups

- Code-Point® Open – for postcode lookups
- Boundary-Line™ – for boundary information
- 1:50 000 Scale Gazetteer – for place name search

We have a table of the mapping layers available on page 10.

Q. Are there any usage limits?

A. Yes, there are usage limits attached to the free service; these are:

- 65,000 tiles of mapping data in a 24-hour period.
- 1,000 place name look-ups (Gazetteer service) in a 24-hour period
- 1,000 postcode look-ups in a 24-hour period
- 1,000 boundary look-Ups in a 24 hour period

Q. Can I add additional URLs to my API key?

A. Yes, you can register as many URLs against your single API key as you wish. Simply log into **My Account**.

Q. Can I use local host to develop my application?

A. Yes, local host is used for development purposes and OS OpenSpace has been configured to work using local host prior to go-live.

Q. Does OpenLayers work with OS OpenSpace?

A. OS OpenSpace is built upon an open-source library called **OpenLayers**. The OpenLayers project provides a standard open mapping **JavaScript**® framework, supported by the Open Source Geospatial Foundation (OSGeo). Further information and API **documentation** and many examples can be found at **www.openlayers.org**.

Q. What browsers are supported?

A. Internet Explorer® 6+, Firefox 1.5+, Safari 2+, Opera 8+ and Google® Chrome™ 1+

Introduction

Case studies

Common questions

Code examples

Technical questions

Service levels

Datasets available

Moving from trial to a
commercial licence

Finding help

Q. Can I advertise alongside my OS OpenSpace mapping?

A. Yes, you are allowed to put suitable ads on your website.

Q. Can I charge for access to my mapping?

A. No. OS OpenSpace is not for commercial gain and must be on a publicly-accessible website. If you wish to create a commercial application then we have options available to you. Please contact us for details on OS OpenSpace Pro.

Q. Am I allowed to use OS OpenSpace in social networks?

A. Yes, you can use OS OpenSpace in a social network, provided that the application that you create is publicly-available.

Q. Am I allowed to use OS OpenSpace on a private network?

A. No. You cannot use your application on a private network or password-protect it. The URL folder you register and the application you build must be publicly-accessible and not behind a password, internal network or other form of restriction.

Code examples

Below is a simple code example to get you started with a basic map showing all layers.

```
<html xmlns="http://www.w3.org/1999/xhtml">
<head>
<title>OpenSpace Tutorial 2</title>
<script type="text/javascript" src="http://openspace.ordnancesurvey.co.uk/osmapapi/openspace.
js?key=insert_your_api_key_here"></script>
</head>
<body onload="init()">
<script type="text/javascript">
var osMap;
function init()
{
    osMap = new OpenSpace.Map('map');
    osMap.setCenter(new OpenSpace.MapPoint(438760, 114760), 10);
    var markers = new OpenLayers.Layer.Markers("Markers");
    osMap.addLayer(markers);
    var pos = new OpenSpace.MapPoint(438760, 114760);
    var marker = new OpenLayers.Marker(pos);
    markers.addMarker(marker);
}
</script>
<h1<Displaying a marker on a map>/h1>
<div id="map" style="width: 500px; height: 300px; border: 1px solid
black;"></div>
</body>
</html>
```

We have developed a code playground, for use with further examples such as:

- Display a basic map using the zoom map stack.
- Display a basic map with postcode/gazetteer search.
- Display a basic map with markers.
- Display an admin boundary.
- Plus many more examples.

Visit the [OS OpenSpace code playground](#).

Introduction

Case studies

Common questions

Code examples

Technical questions

Service levels

Datasets available

Moving from trial to a commercial licence

Finding help

Technical questions

Q. Do you have a forum that OS OpenSpace users can use to post questions?

A. Yes, we have a very active **Forum**, which contains a vast number of helpful hints and tips.

Q. How do I add a GPX file to my mapping?

A. We have an **OS OpenSpace Forum**, which contains a vast number of useful items added by OS OpenSpace users. One of our contributors has an excellent post on this topic.

Q. I keep getting an http referrer error; why is this?

A. This is usually because the registered URL is not correctly registered. This can easily be resolved by emailing **businessenquiries@ordnancesurvey.co.uk** stating your API key and the URL that you need to get added.

Q. I keep getting a 'sorry map tile cannot be displayed' error; why is this?

A. This is usually a coding issue and there could be a number of reasons for this; we would suggest you first ensure that you are calling the map correctly and make sure you are requesting the mapping by resolution. Check for any typos and badly-placed uppercase letters. If you are still getting the error, email your code and URL to **businessenquiries@ordnancesurvey.co.uk** and we will look into this for you.

Q. Can I limit the number of mapping layers I display?

A. Yes you can, by simply deleting the resolution of the mapping layers you no longer want to display, from your source code.

Q. I am getting really large gridlines that are obscuring the mapping; why is this?

A. This is down to the border preferences you have set in your code; if you reduce your border code to zero this should resolve your issue.

Q. Can I make the mapping screen as big or as small as I need to?

A. Yes; you can set the screen to any size you wish.

Q. Do I need to sign up to the free trial before I can use OS OpenSpace Pro?

A. Yes; we recommend that you sign up for an API key on our OS OpenSpace website so that you can start developing straight away, subject to the terms and conditions; once this is complete, the API key can be upgraded to OS OpenSpace Pro once all the licences are in place.

Q. Can OpenSpace be used in Wordpress®?

A. We have a simple **tutorial** that will help you to integrate your OS OpenSpace map into WordPress. There is also a very helpful plug-in that an external developer created and you can get this by using the link at the bottom of the tutorial.

Q. Can OS OpenSpace be used in Blogger®?

A. We have a simple **tutorial** that will help you to integrate your OS OpenSpace map into Blogger.

Q. Do you have any tutorials available?

A. We have a number of tutorials available on **our website** for you to use.

Service levels

Service levels	Service availability
Service availability*	99.9% 24/7 (44 minutes/month)
Planned maintenance	8.00 am–10.00 am on Thursdays and 8.00 am–2.00 pm on Sundays

The OS OpenSpace service is available 24/7, with email support from 8.30 am to 5.30 pm direct to the Customer Service Centre.

Availability – the amount of time expressed as a percentage in a calendar month that the service is available.

Data start time – the time it takes for the server side systems, following a request from our test domain, to send the first byte of data back to the test domain using two Mbps download speed.

Downtime period – the period of time when the data start time, less than three seconds for at least 10 consecutive minutes.

In any calendar month the availability for OS OpenSpace is calculated by subtracting all downtime periods from the number of minutes in a calendar month, divided by the number of minutes in a calendar month.

Scheduled downtime – there will be available planned downtime totalling 12 hours per annum, scheduled maintenance will not constitute downtime. Scheduled downtime will occur in the following maintenance windows: 8.00 am–10.00 am on Thursdays and 8.00 am–2.00 pm on Sundays.

Datasets available through OpenSpace

Product	Resolution	Index
OS Street View® (1:10 000 scale)	1	SV
	2	SVR
OS VectorMap® District	2.5	VMD
	4	VMDR
1:50 000 Scale Colour Raster	5	50K
	10	50KR
1:250 000 Scale Colour Raster	25	250K
	50	250KR
Miniscale®	100	MS
	200	MSR
GB Overview* 2	500	OV2
GB Overview*+	1000	OV1
GB Overview*	2500	OV0

OS OpenSpace look-ups

Product	Purpose
Code-point® Open	for postcode look-up
Boundary-Line™ Data	for boundary information
1:50 000 Scale Gazetteer	for place name search

Moving from OS OpenSpace free to a commercial licence

To move from your free API key to a commercial licence, you will be required to contact either your account manager or email newbusinessenquiries@ordnancesurvey.co.uk to request the upgrade. Once your request has been received, you will be allocated an account manager (if you do not already have one) and your account manager will take you through the pricing and licensing details. After you have signed up to the most suitable OS OpenSpace Pro contract, your account will be upgraded and the mapping layers you require allocated. This upgrade will generate a new OS OpenSpace Pro API key, which you will need to change in your code to ensure that you are receiving the correct data and unlimited usage.

Introduction

Case studies

Common questions

Code examples

Technical questions

Service levels

Datasets available

Moving from trial to a
commercial licence

Finding help

Finding help



Website

www.ordnancesurvey.co.uk/business-and-government/help-and-support/web-services/os-openspace/index.html



Email:

businessenquiries@ordnancesurvey.co.uk



Phone:

03456 05 05 05



FAQ's

www.ordnancesurvey.co.uk/business-and-government/help-and-support/web-services/os-openspace/os-openspace.html



Forum

Access through the OS OpenSpace website



Documentation

Access through the OS OpenSpace website

www.ordnancesurvey.co.uk
customerservices@ordnancesurvey.co.uk

General enquiries: +44 (0)3456 05 05 05
Dedicated Welsh Language HelpLine: 03456 05 05 04
Textphone (deaf and hard of hearing users only please): +44 (0)23 8005 6146

Customer Service Centre, Ordnance Survey, Adanac Drive, SOUTHAMPTON, United Kingdom, SO16 0AS.

This document has been screened in accordance with the requirements set out in Ordnance Survey's Equality Scheme.
If you have difficulty reading this information in its current format and would like to find out how to access it in a different format (Braille, large print, computer disk or in another language), please contact us on: +44 (0)3456 05 05 05.

Ordnance Survey, the OS Symbol, Code-point, Land-Form PANORAMA, OS OpenSpace, OS Steet View, OS VectorMap and Strategi are registered trademarks and Boundary-Line is a trademark of Ordnance Survey, the national mapping agency of Great Britain. Ordnance Survey acknowledges all trademarks. Ordnance Survey © Crown copyright

D10125_0614

