

Symphony AR

Visualised, real-time data
relevant to your location



Leaders and innovators

Aligned Assets is the leading provider of address management and augmented reality solutions, helping organisations consume, share, integrate and match address data. Since 1996, our innovative solutions have provided accuracy and efficiency to local authorities, emergency services and other organisations that use address data.

Symphony AR



Symphony AR is a cutting edge augmented reality application that provides its users visual, real-time data relevant to their current location and circumstance. This is represented as augmented reality markers superimposed over the view seen through the camera on a smartphone, tablet or smart glasses. Visualising data against the physical world in this way creates a vast range of benefits from helping protect the public and safeguarding front-line staff, to helping cut down fraud or providing access to any geospatial data.

Whatever your sector or industry, if you're using location based data, turning your data into augmented reality is cost-effective, quick and easy to use.

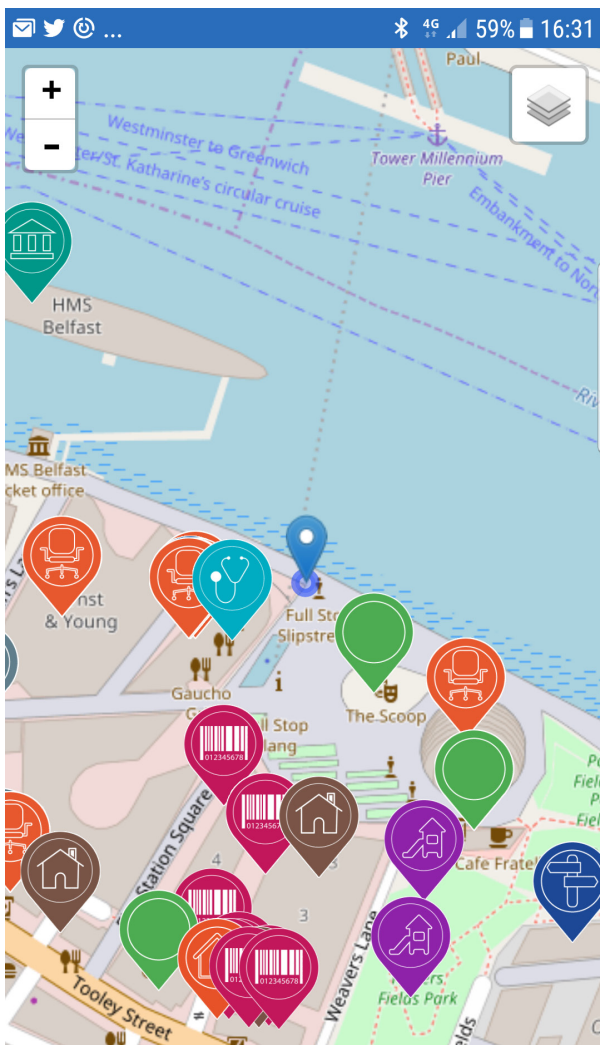
Location intelligence at a glance

The Symphony AR app can interpret the data you want to be visually represented as AR markers on a smart device, be they risk markers for emergency services, tourist points of interest for local towns, or Tree Preservation Orders for Local Authority Planning Departments. By interacting with the image you can glean more information on the specific location or risk. For context, the range of the view can also be seen on this screen.

Sharing and viewing information consistently in this way will help save staff valuable time when assessing risk at a scene, identifying access points for repairs or adding value to the public's experience of a town.

Using AR markers to rapidly assess risk





Viewing the wider scene

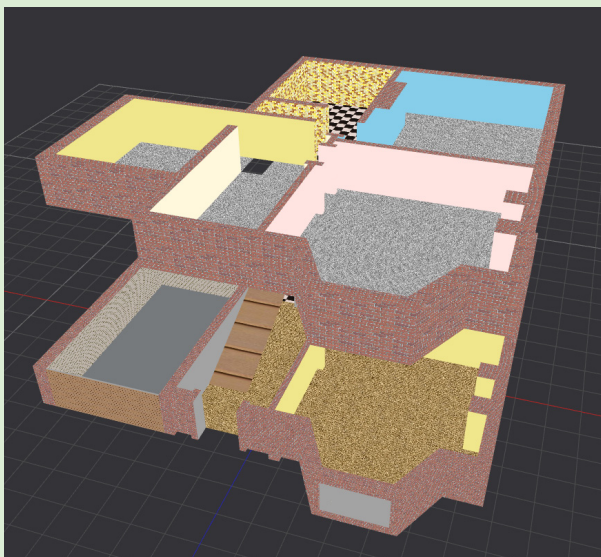
For a wider view of the local environment, at the click of a button, you'll be able to switch from an augmented reality view to a traditional 2D map that still visualises your specific data with the same markers. In a similar way, the Boundary Awareness view will show an even broader overview of a defined area and can be beneficial for displaying environmental factors such as flood risk areas or protected woodlands.

Virtual tours through 3D modelling

Through Symphony AR, the 3D model feature can be used to virtually recce any building prior to going in. By being able to zoom in and pan round to any specific points within a building, front-line staff will be better prepared as they move into a potentially challenging situation. This can help clarify a plan of action time-effectively while minimising risk.

Cutting-edge, cost-effective, flexible

Symphony AR is cutting-edge technology that's been designed for cost-effective accessibility across all sectors. Easy to implement and manage in-house, it provides a quick way of visualising and sharing your own data, promoting cost- and time-efficiency, as well as better safeguarding of staff and the public.



Animated 3D models can provide potentially life-saving insight

The future is now for augmented reality



Mobile analyst Tomi Ahonen projected that augmented reality will become so mainstream, it will reach 1 billion people by 2020.

The future for augmented reality within the public sector is not only a natural step, but one that has been greatly facilitated by the significant groundwork laid down by both the UPRN and the associated geographic location against each property.

Whatever data your organisation holds it's likely it relates to a location. Displaying that information in an augmented fashion can help deliver tangible benefits for your staff and customers, both time- and cost-effectively.

Call us to find out how Symphony AR can be adapted for your organisation:

01483 717950

www.aligned-assets.co.uk

